

VXR-7000 Quick Reference Guide (NA)

TOPICS

- Overview
- FAQs
- Basic Programming

PAGE

1
1
2-6

OVERVIEW

Product: VXR-7000

Required Equipment:

- ☐  Laptop/Desktop PC with Windows XP service pack 3/vista/windows 7
- ☐  FIF-12A and CT-104A Programming cable
- ☐  Latest Clone editor Software – CE27

NOTE: Software & Firmware is accessible via Vertex Standard Online (VSOL)

Required Information:

- ☐ Frequencies (Provided by FCC)

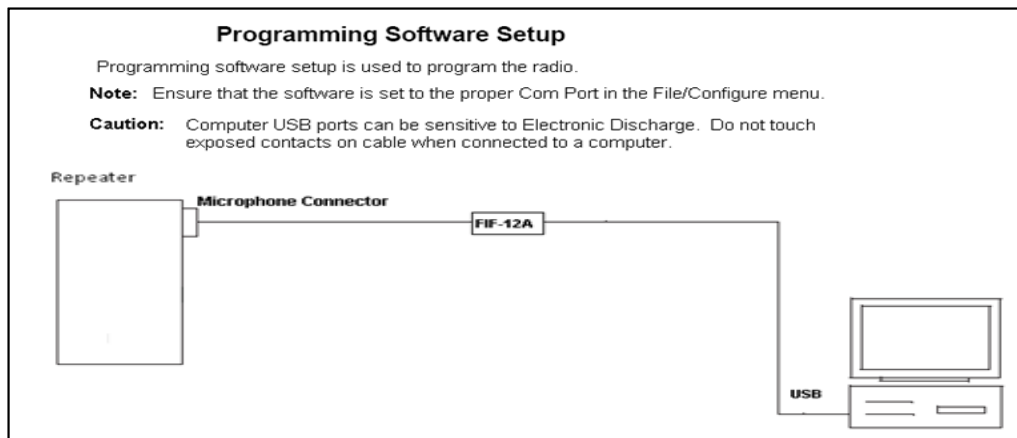
FAQs

<u>Question</u>	<u>Actions</u>	<u>If Problem Persists</u>
Where is the current software / firmware posted?	Access VSOL > Resource Center > Technical Information> VXR-7000> Programming >CE27 software	Contact 800-283-7839 > VSOL Tier 1
Radio will not read	Uninstall and reinstall USB interface device drivers.	Contact 800-283-7839 > Technical Support

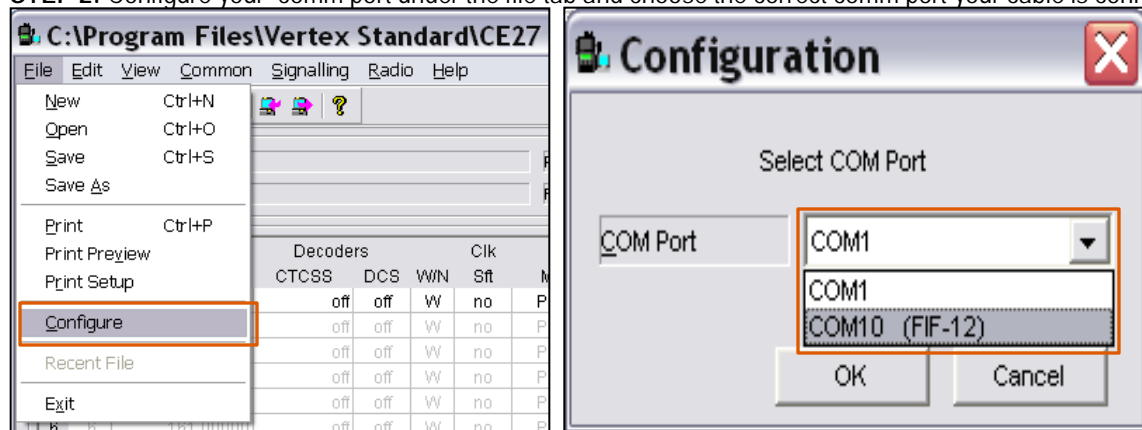
VXR-7000 Quick Reference Guide (NA)

BASIC PROGRAMMING

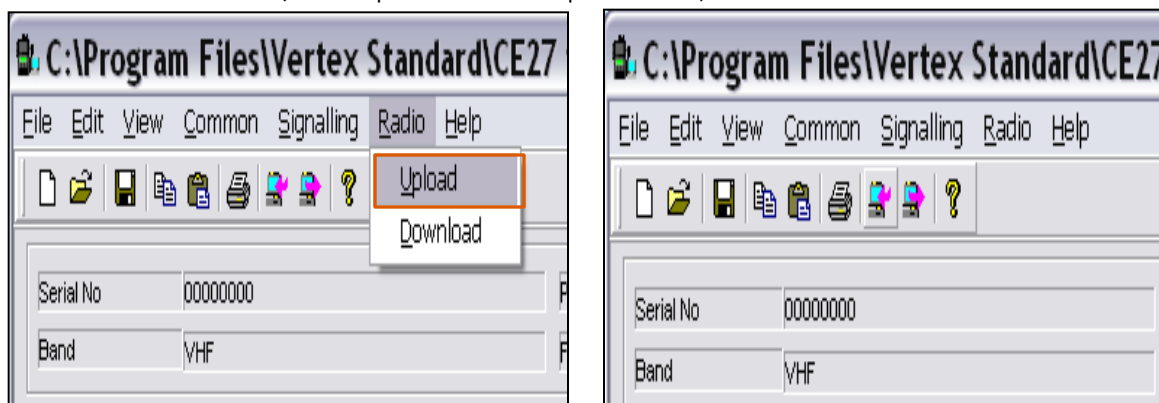
STEP 1: Complete the following set up configuration:



STEP 2: Configure your comm port under the file tab and choose the correct comm port your cable is connected to.



STEP 3: Read the radio (Radio>upload or use the upload button).



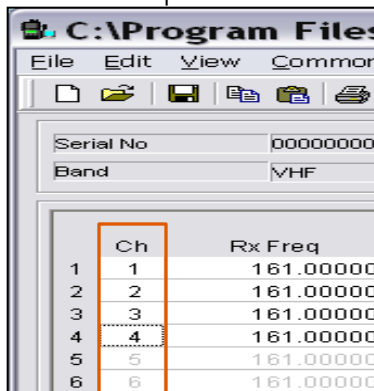
VXR-7000 Quick Reference Guide (NA)

BASIC PROGRAMMING continued

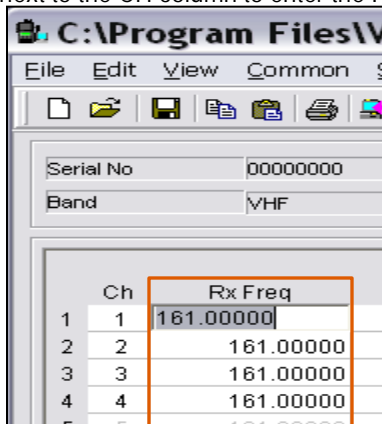
STEP 4: Verify the radio has the latest firmware.



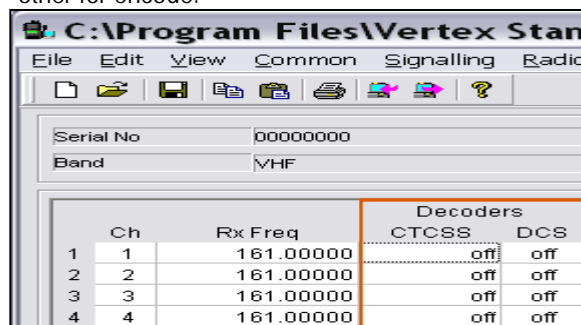
STEP 5: Next double click on the number in the CH column or select box and hit space bar to add or delete a channel.



STEP 6: Next double click or select the box and hit space Bar next to the CH column to enter the RX frequency.



STEP 7: Next double click or select the box, hit the space Bar next to the RX Frequency to enable and select a tone for the CTCSS or DCS Decoder field. (You can use either or but never both for the same channel decoder, there can be a mismatch but only when using 1 for decode and the other for encode).



****when you select the desired sub-audio field a tone table opens up****

CTCSS Tone Table

Tone Select				
off	91.5	127.3	179.9	159.8
67.0	94.8	131.8	186.2	183.5
69.3	97.4	136.5	192.8	189.9
71.9	100.0	141.3	203.5	196.6
74.4	103.5	146.2	210.7	199.5
77.0	107.2	151.4	218.1	206.5
79.7	110.9	156.7	225.7	229.1
82.5	114.8	162.2	233.6	254.1
85.4	118.8	167.9	241.8	
88.5	123.0	173.8	250.3	

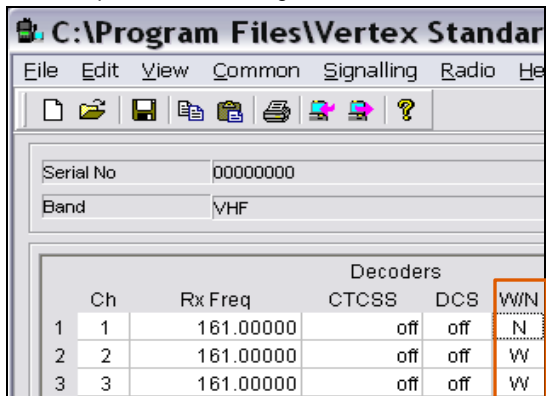
DCS Tone Table

Code Select												
off	023	025	026	031	032	036	043	047				
051	053	054	065	071	072	073	074	114				
115	116	122	125	131	132	134	143	145				
152	155	156	162	165	172	174	205	212				
223	225	226	243	244	245	246	251	252				
255	261	263	265	266	271	274	306	311				
315	325	331	332	343	346	351	356	364				
365	371	411	412	413	423	431	432	445				
446	452	454	455	462	464	465	466	503				
506	516	523	526	532	546	565	606	612				
624	627	631	632	654	662	664	703	712				
723	731	732	734	743	754							

VXR-7000 Quick Reference Guide (NA)

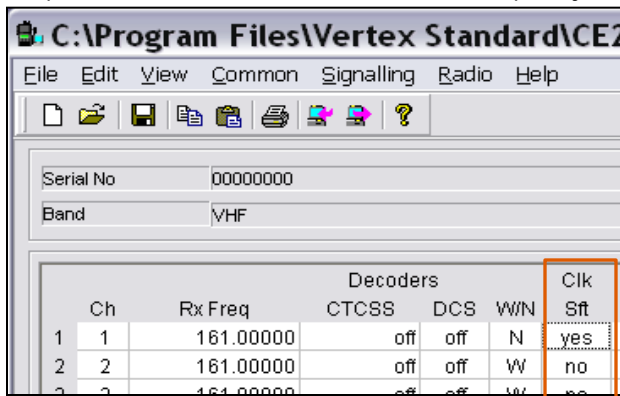
BASIC PROGRAMMING continued

STEP 8: Setting up wide and narrowband channels, the W/N column determines if channel will be wide or narrowband, double click the box or select the box and hit the space bar to change status.



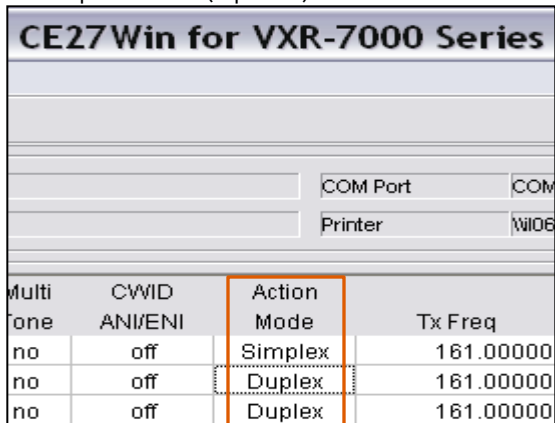
		Decoders			
Ch	Rx Freq	CTCSS	DCS	W/N	
1	161.00000	off	off	N	
2	161.00000	off	off	W	
3	161.00000	off	off	W	

STEP 9: Next double click or select the box and hit space bar next to the W/N column to turn on/off the clock shift feature, clock shift is only used to move a spurious response, "birdie" should it fall on a desired frequency.



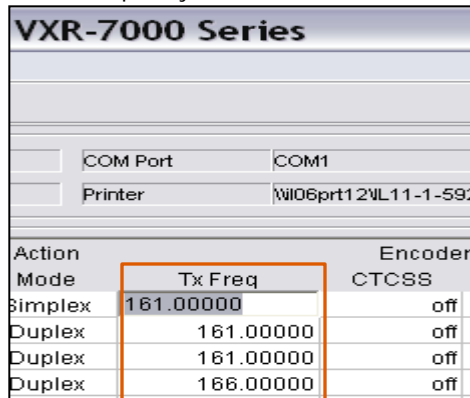
		Decoders				Clk Stt
Ch	Rx Freq	CTCSS	DCS	W/N		
1	161.00000	off	off	N	yes	
2	161.00000	off	off	W	no	
3	161.00000	off	off	W	no	

STEP 10: Next double click or select the box and hit space bar for the Action Mode column to enable the repeater for either "Simplex Mode" (base station) or "Duplex Mode" (repeater).



Multi	CWID	Action	Tx Freq
tone	ANI/ENI	Mode	
no	off	Simplex	161.00000
no	off	Duplex	161.00000
no	off	Duplex	161.00000

STEP 11: Double click or select the box and hit space bar for the TX frequency column to enter the TX frequency.



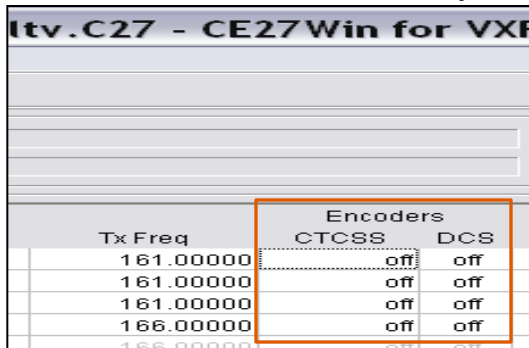
VXR-7000 Series		
COM Port	COM1	
Printer	\\106prt12\\L11-1-592	
Action	Tx Freq	Encoder
Mode		CTCSS
Simplex	161.00000	off
Duplex	161.00000	off
Duplex	161.00000	off
Duplex	166.00000	off

****If unit is being used in "Simplex Mode" (base station) then step 10 can be skipped due to when the frequency was entered into RX frequency column it automatically copied to TX frequency column.****

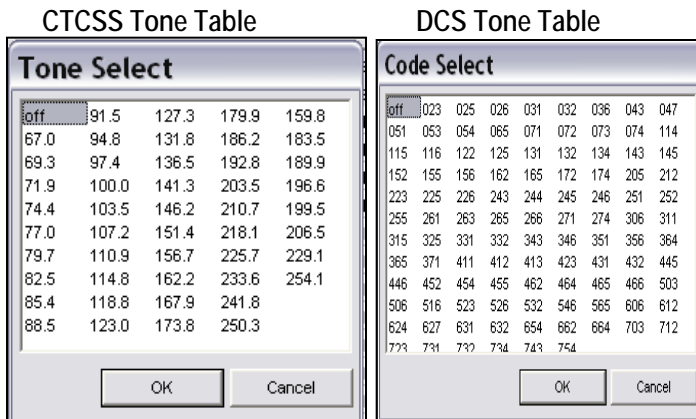
VXR-7000 Quick Reference Guide (NA)

BASIC PROGRAMMING continued

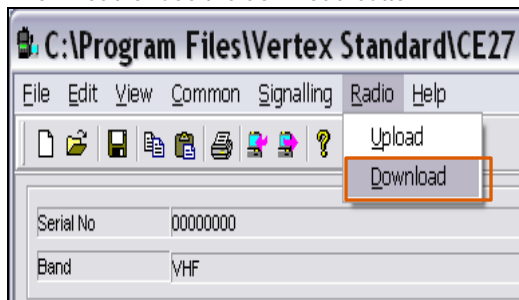
STEP 12: Next double click or select the box and hit space bar, next to the TX Frequency column to enable and select a tone for the CTCSS or DCS Encoder field. (You can use either or but never the same channel encoder. There can be a mismatch but only when using 1 for decode and the other for encode).



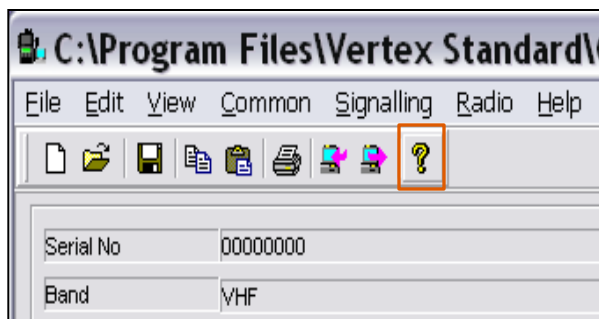
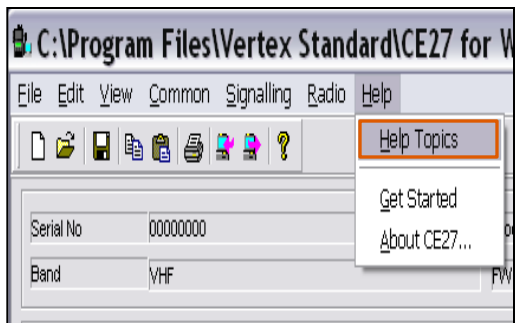
****when you select the desired sub-audio field a tone table opens up****



STEP 13: After all the data has been entered for the desired channels write program to the unit. (Radio> Download or use the download button).



****Additional help on the different columns can be found in the help topics menu. (You can select the help tab or button)****



VXR-7000 Quick Reference Guide (NA)

BASIC PROGRAMMING continued

